

# PROVERBS PEOPLE FLASHCARDS

RECOMMENDED  
FOR USE WITH  
PROVERBS PEOPLE  
BOOK 1 AND  
BOOK 2  
AGES 7-13



## Stubborn Fool



This type of fool  
hates wisdom and  
won't listen to  
instruction.



## Talebearer



A talebearer tells the  
secrets of another.



## Talebearer



A talebearer causes  
deep hurt.





Proverbs 1:7

**\*ALTERNATIVE BIBLE VERSION OPTION\***

This file is an option for those who prefer to use another Bible translation instead of KJV. Just print the flashcards and then look up the verse in your preferred version and write it on the back side of the cards. The work of finding the appropriate verses is done for you. You could even have your child write it if you wish to help them remember it better.

**PRINTING INSTRUCTIONS**

The flashcards should be printed double-sided. Printing on cardstock will make them more durable. You can also have them laminated if you wish. Most printers have an option for printing a double-sided document.

If you have any trouble doing so, here is a link to a great site that explains in detail how to print double-sided, with either a PC or a MAC:

<https://helpx.adobe.com/acrobat/kb/print-double-sided-acrobat-reader.html>

Cutting each sheet in the center horizontally and vertically should give you four cards measuring 4.25 x 5.5 inches, with a 1/4 inch margin all around.



Proverbs 18:8



Proverbs 11:13



# Faithful Witness



A faithful witness  
will not lie.



# Faithful Witness



God delights  
in the honest  
person.



# Wise Man



A wise man  
appreciates rebuke.



# Wise Man



A wise man  
listens  
to counsel.





Proverbs 12:22



Proverbs 14:5



Proverbs 1:5



Proverbs 9:8



# Virtuous Woman



A virtuous wife  
is a crown to her  
husband.




# Virtuous Woman



The wise woman  
builds up her  
family.




# Wicked



Avoid the way of  
the wicked,  
run from it.




# Wicked



The wicked will  
cut his life short.





Proverbs 14:1



Proverbs 12:4



Proverbs 10:27



Proverbs 4:14–15



# Slothful



A slothful man's  
life is confusing  
and hard.



# Slothful



Prepare for the  
future.



# Simple Fool



The simple fool  
can be taught.



# Self-Confident Fool



Do not make a  
close friendship  
with this type of  
fool.





Proverbs 6:6-8



Proverbs 15:19



Proverbs 13:20



Proverbs 1:4





# Scorning Fool



God punishes  
scorners.




# Righteous



The righteous  
man cares for  
the poor.




# Righteous



The righteous  
hate lying.




# Prudent Man



God rewards  
the prudent with  
knowledge.





Proverbs 29:7



Proverbs 19:29



Proverbs 14:18



Proverbs 13:5



# Prudent Man



A prudent man is  
cautious of evil and  
guards himself  
from it.



# Pride



Pride brings  
destruction.



# Pride



Pride brings  
shame.



# Patient Man



If you are slow to  
anger you are better  
than the powerful.





Proverbs 16:18



Proverbs 22:3



Proverbs 16:32



Proverbs 11:2



# Patient Man



A soft answer  
turns away anger.



# Merciful



It brings honor to  
God to have mercy  
on the poor.



# Merciful



Seek to be bound by  
mercy.



# Liar



A liar will be  
discovered and  
punished.





Proverbs 14:31



Proverbs 15:1



Proverbs 19:5



Proverbs 3:3



# Liar



A liar loves  
listening to  
falsehood.



# Humble



God will lift up  
the humble.



# Humble



God gives grace  
to the humble.



# Honest



Value highly truth,  
wisdom, instruction,  
and understanding.





James 4:10



Proverbs 17:4



Proverbs 23:23



Proverbs 3:34





# Honest



Seek to speak  
truth.



# Flatterer



He who flatters  
another is laying a  
snare for him.



# Flatterer



Have nothing to do  
with the person who  
flatters others.



# Fearful



The fear of man  
brings a snare.





Proverbs 29:5



Proverbs 8:7



Proverbs 29:25



Proverbs 20:19



# Fearful



He who listens to  
God will be free  
of fear.



# Diligent



The diligent shall  
have positions of  
leadership.



# Diligent



God blessed  
diligence.



# Cruel



Evil will befall the  
cruel person.





Proverbs 12:24



Proverbs 2:33



Psalms 140:11b



Proverbs 10:4



# Cruel



The cruel person  
brings trouble upon  
himself.



# Trusting



The Lord shields  
those who place their  
trust in Him.



# Trusting



Place your trust in  
the Lord and He will  
direct your steps.



# Committed Fool



This fool has  
rejected God.





Proverbs 30:5



Proverbs 11:17



Psalms 14:1



Proverbs 3:5-6



# Covetous



Hating covetousness  
prolongs your life.



# Covetous



Jesus cautioned us  
to be content with  
what we have.



# Contented



Be content with what  
you have NOW.



# Contented



Give thanks ALWAYS  
in ALL things.





Luke 12:15



Proverbs 28:16b



Ephesians 5:20



Hebrews 13:5





# Angry Man



Turn from anger.  
It brings shame.



# Angry Man



Do not be friends  
with an angry  
person.



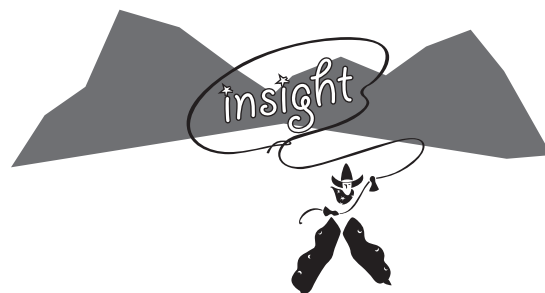
# Contentious Woman



A contentious  
woman is  
deceiving.



# Contentious Woman



A contentious  
woman is a constant  
irritation to others.





Proverbs 22:24



Proverbs 25:8



Proverbs 27:15



Proverbs 11:22